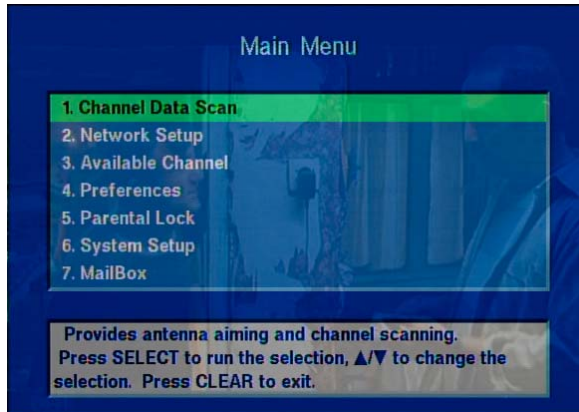


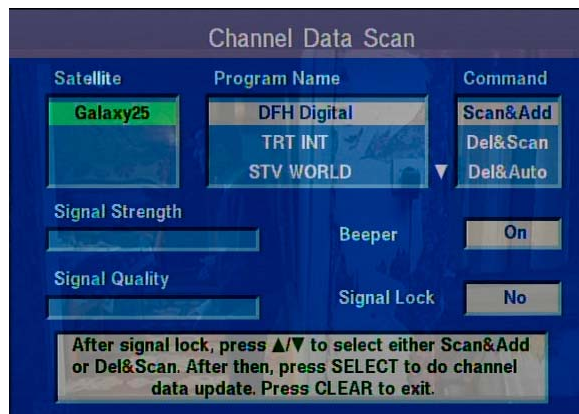
TRT Turk Set Up for Samsung DSR 2700 Receiver

Step 1 : Press “Menu”

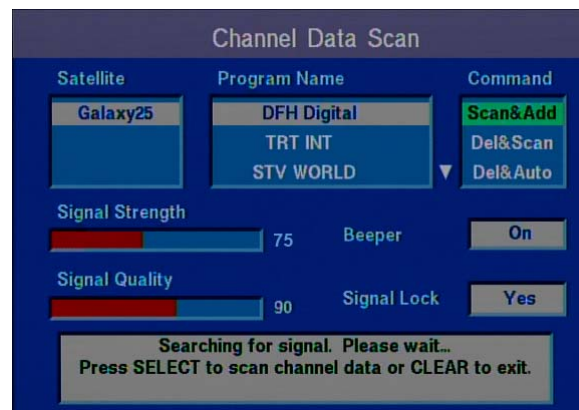
Step 2 : Press “Select” on “Channel Data Scan”



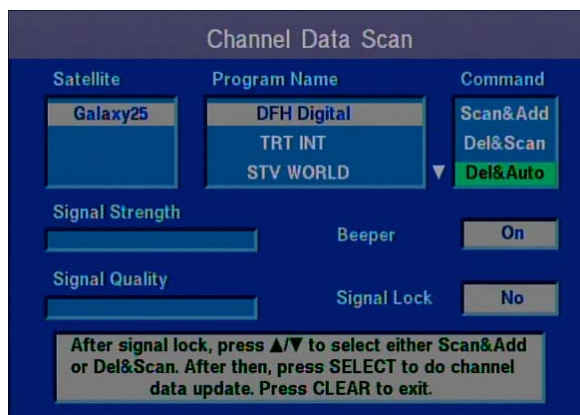
Step 3 : Move the green highlight to right on to “Scan & Add”



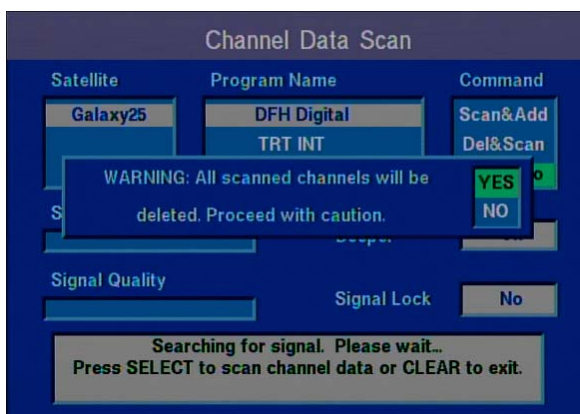
Step 4 : Press “Select” one time to check the signal quality. If there is signal quality press “Clear” one time.



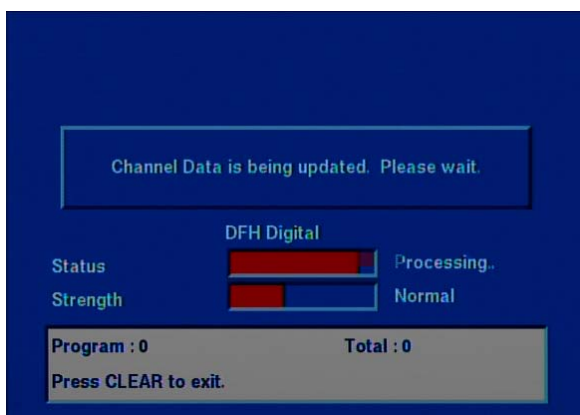
Step 5 : Go down to “Del & Auto” and press “Select”



Step 6 : It will ask you if you want to delete all information on the receiver. Press “Select” on “Yes”



Step 7 : It will scan all the channels on the receiver and go back to “Channel Data Scan” screen.



Step 8 : Press “Clear” button on the remote control until you get to channel number 1.

TRT Turk will be on Channel number 13

